



STATE OF NORTH CAROLINA
DEPARTMENT OF TRANSPORTATION

ROY COOPER
GOVERNOR

JAMES H. TROGDON, III
SECRETARY

December 11, 2019

To: Prospective Bidders

From: Jonathan W. Mitchell
Division Contracts and Proposals Engineer

DocuSigned by:
Jonathan W Mitchell
02B404268BC84C2...

Contract ID#: DC00279

WBS Element: 2019CPT.03.17.20672
2019CPT.03.18.20712

**Subject: Addendum #1: RESURFACING & PATCHING EXISTING
PAVEMENT, ETC.**

The Subject contract proposal contains the following addendum:

- 1- Revisions to the *DC00279_Onslow Maps, Etc.* document:
 - a. Original fourth page (Map 5 Indian Hill Rd.) removed.
 - b. Page 14 - Map 26 (SR 1272) revised to read *S. Poplar Dr.* instead of *S. Popular Dr.*
 - c. Page 15 - Map 28 (SR 1190 Navarro Loop) length corrected to read [MP 0.00 – MP 0.07] not [MP 0.00 – MP 0.74]

*****An Addendum has been added to Bid Express.**

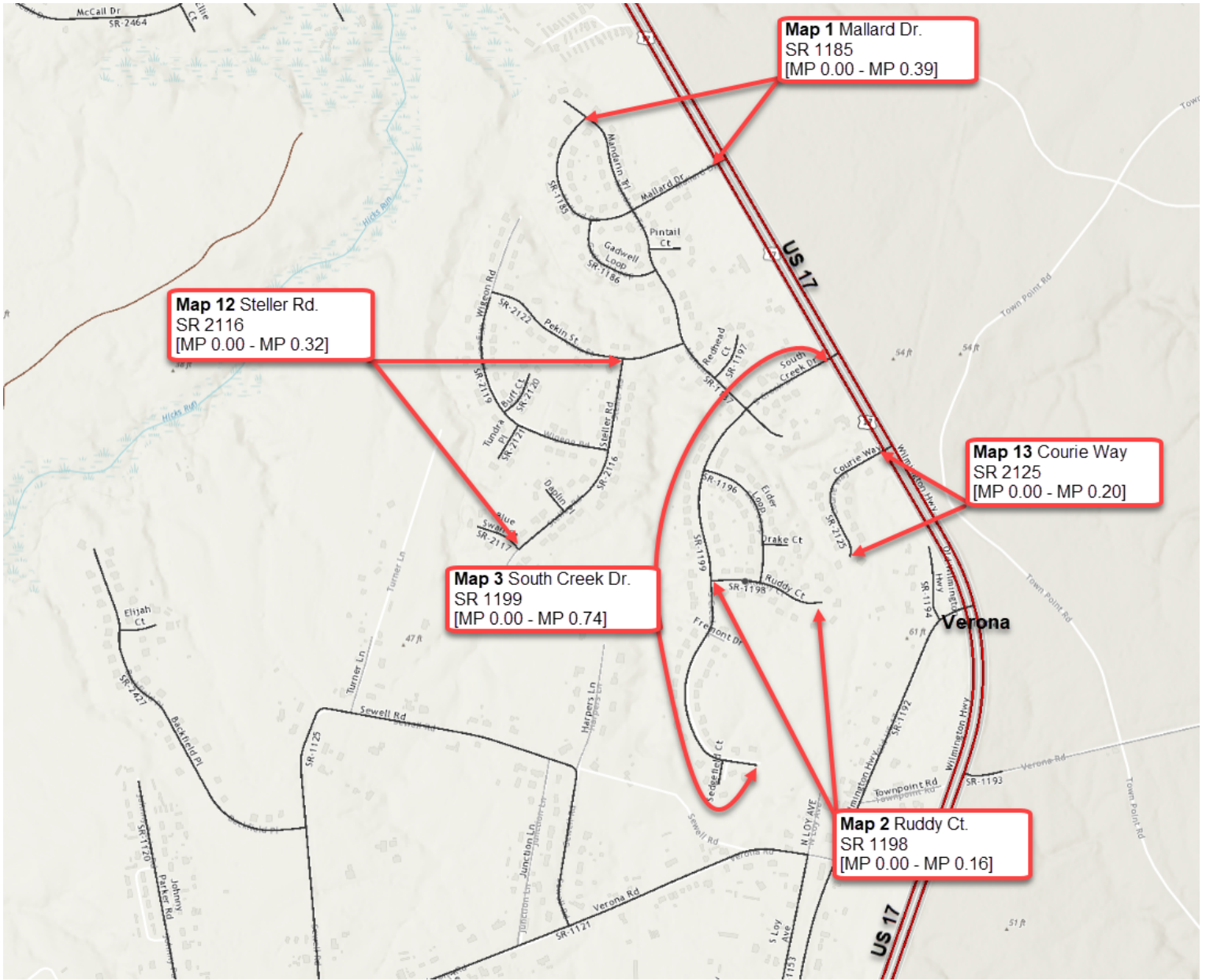
JWM/mpk

Mailing Address:
NC DEPARTMENT OF TRANSPORTATION
DIVISION OF HIGHWAYS
5501 BARBADOS BOULEVARD
CASTLE HAYNE, NC 28429-5647

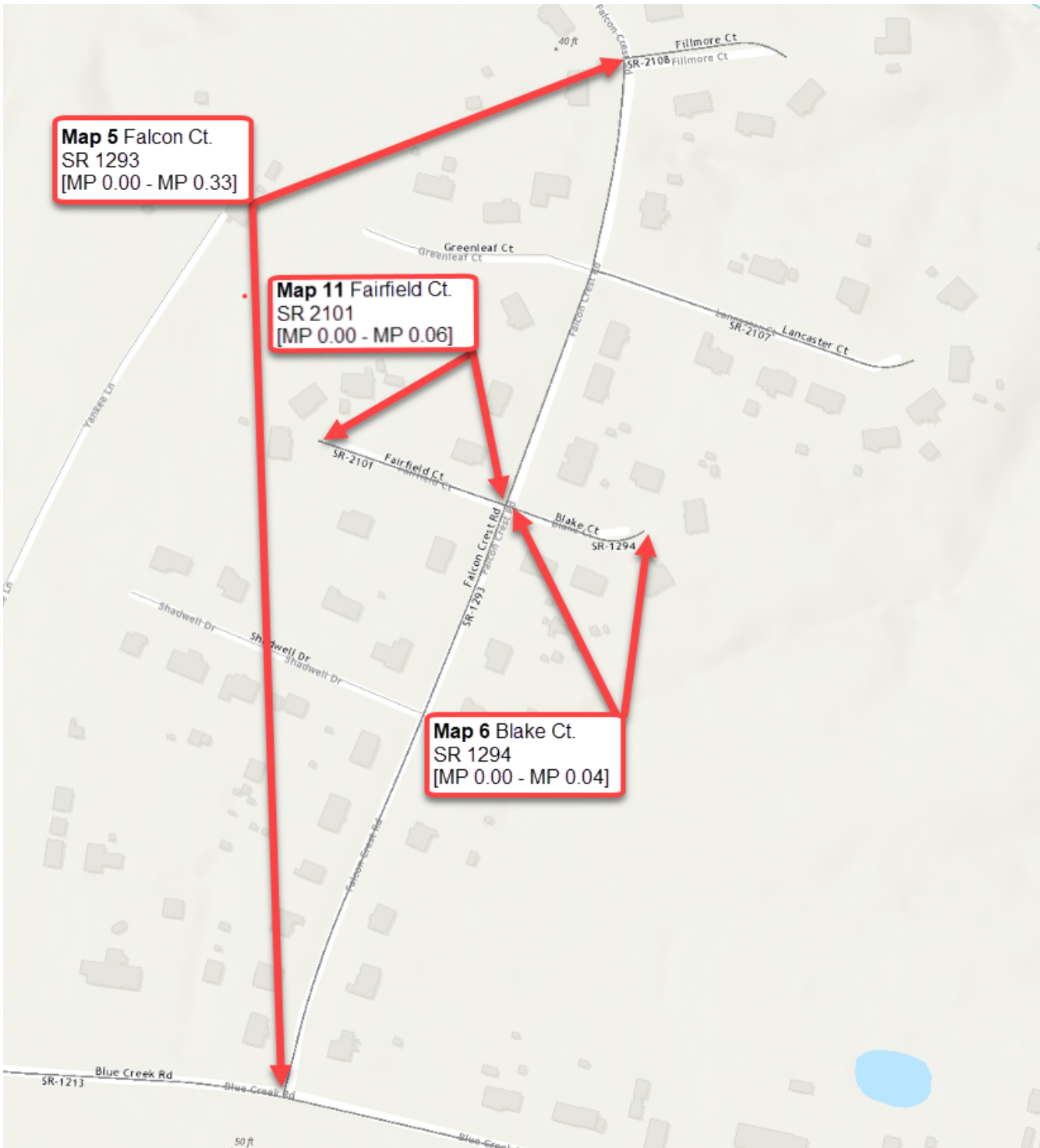
Telephone: (910) 341-2000
Fax: (910) 675-0143
Customer Service: 1-877-368-4968

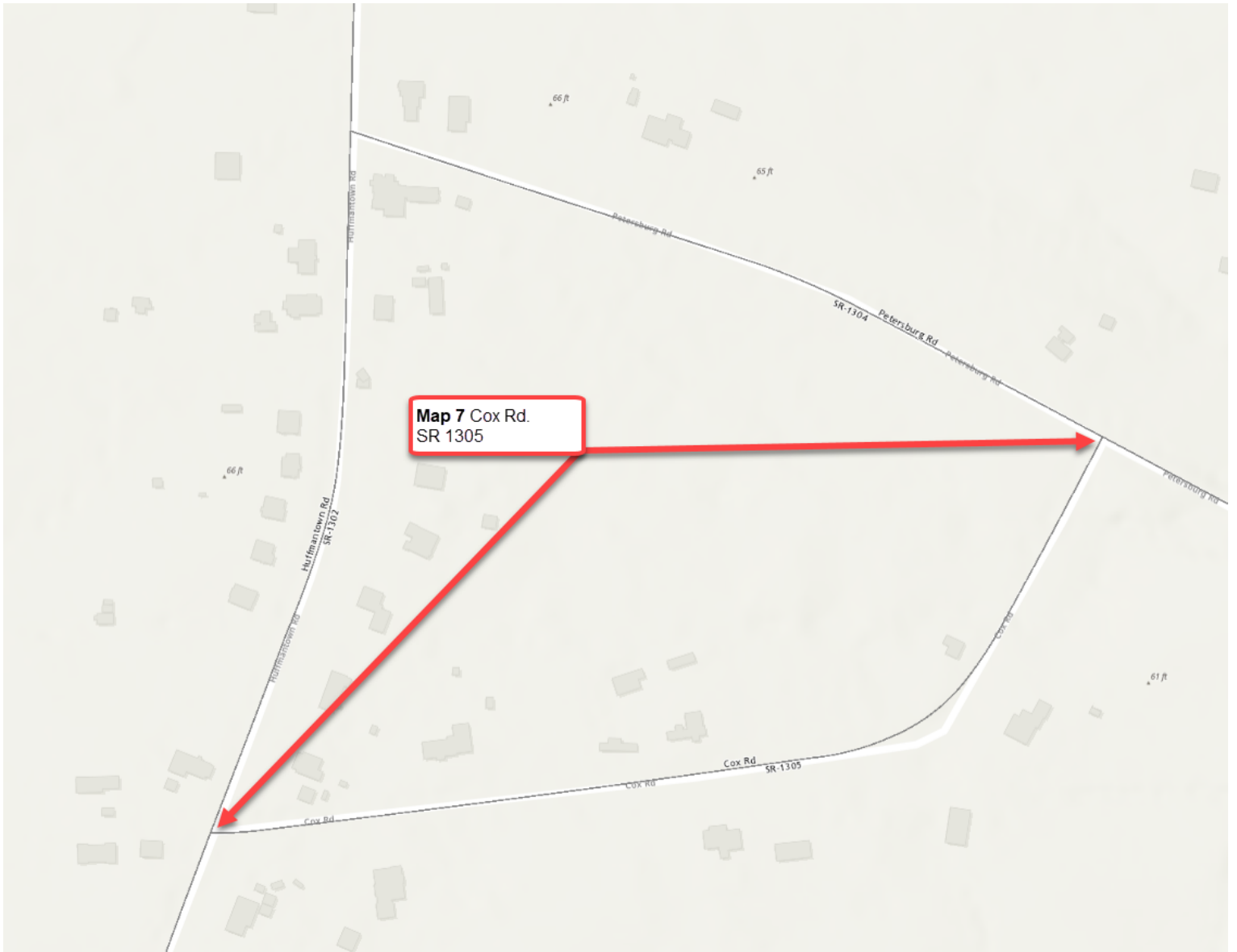
Website: www.ncdot.gov

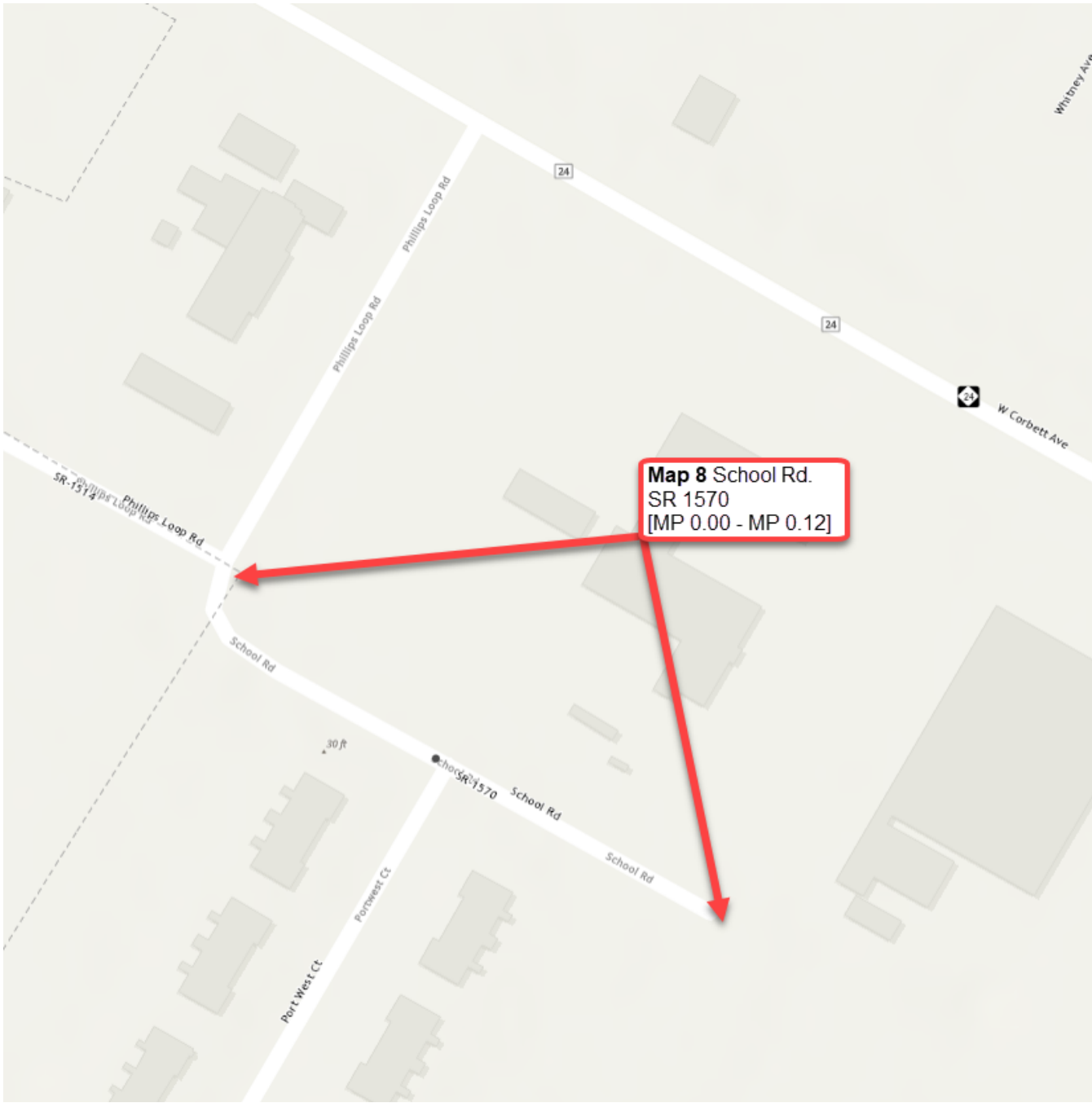
Location:
5501 BARBADOS BOULEVARD
CASTLE HAYNE, NC 28429-5647

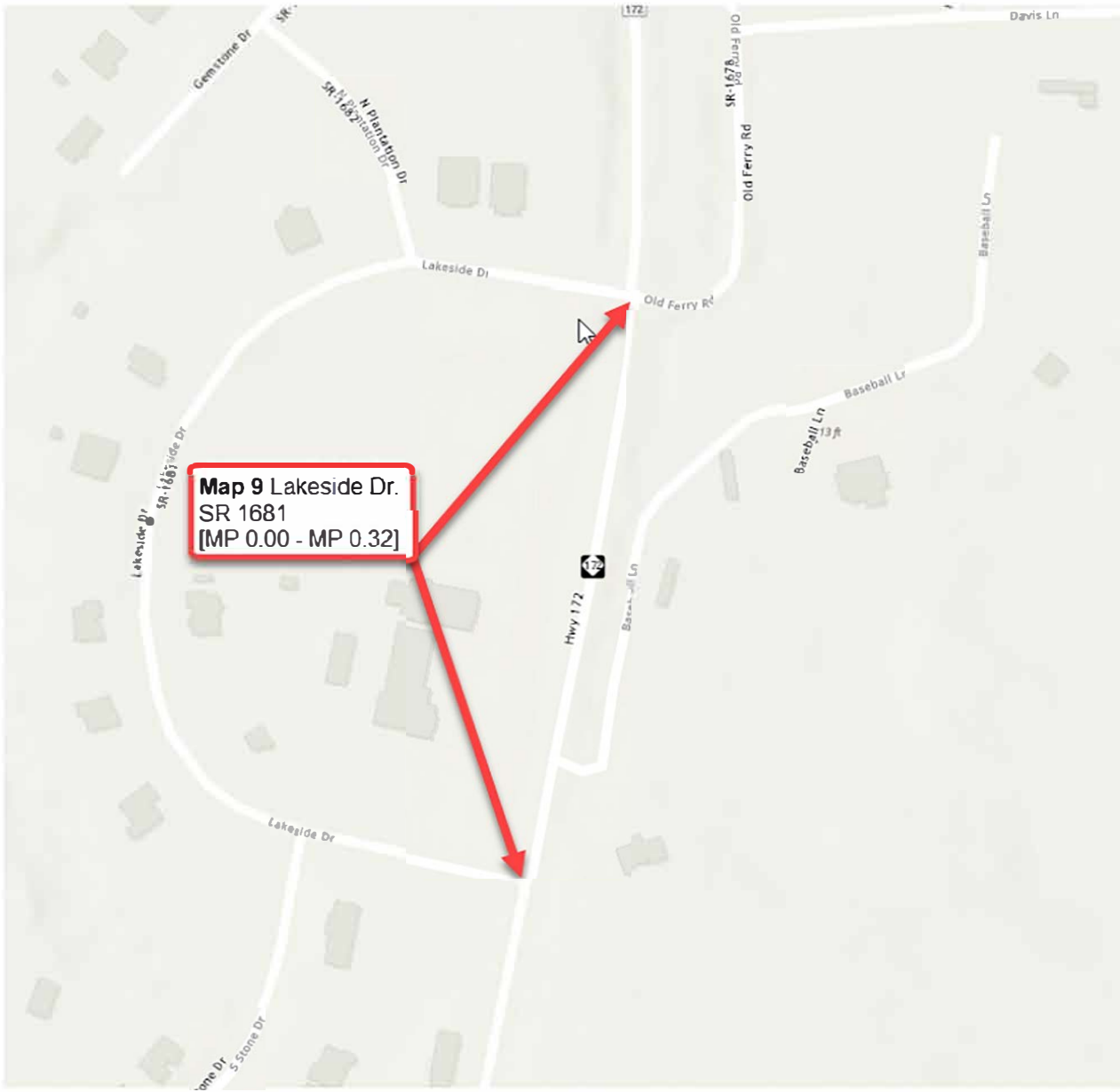


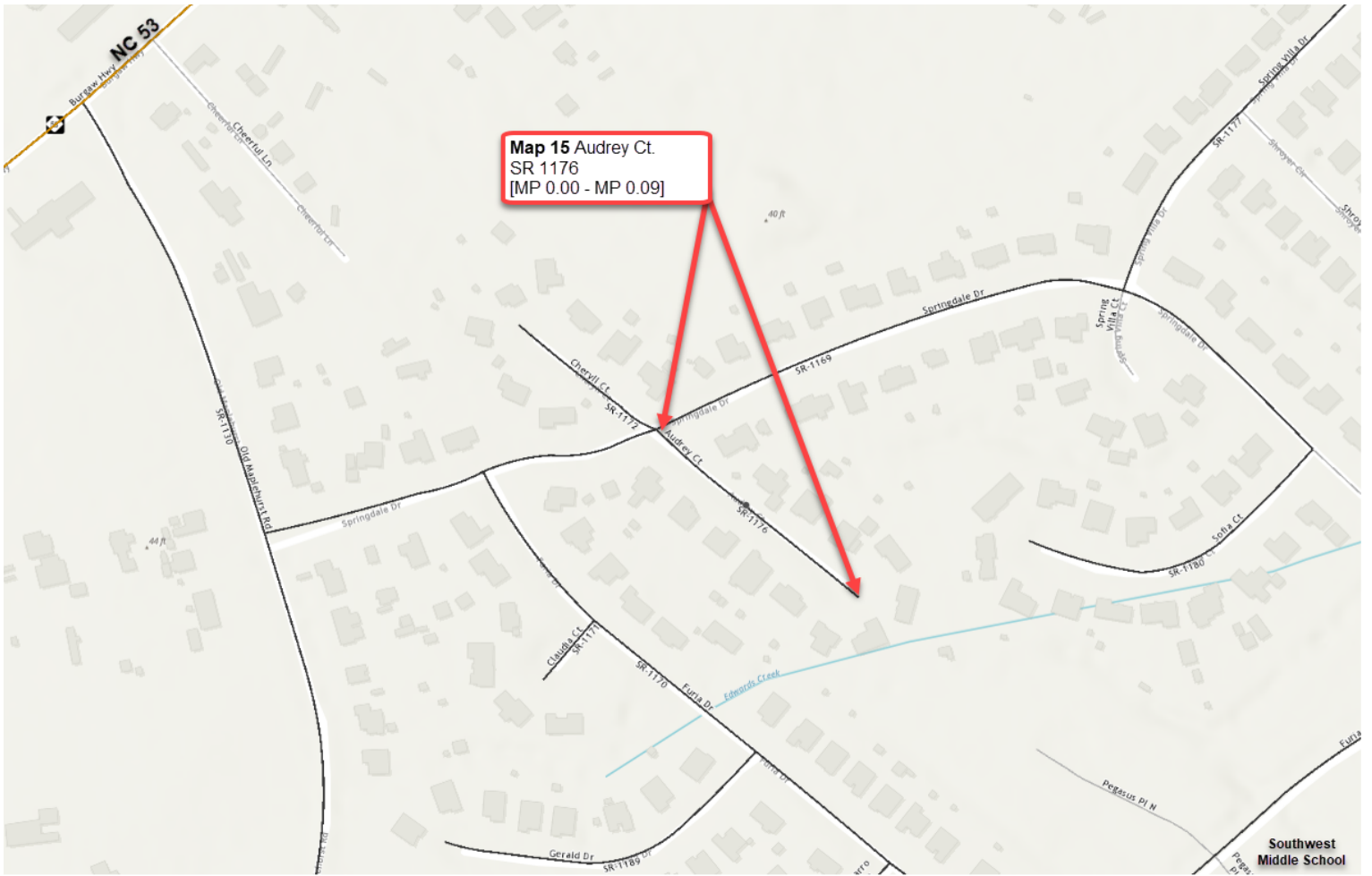


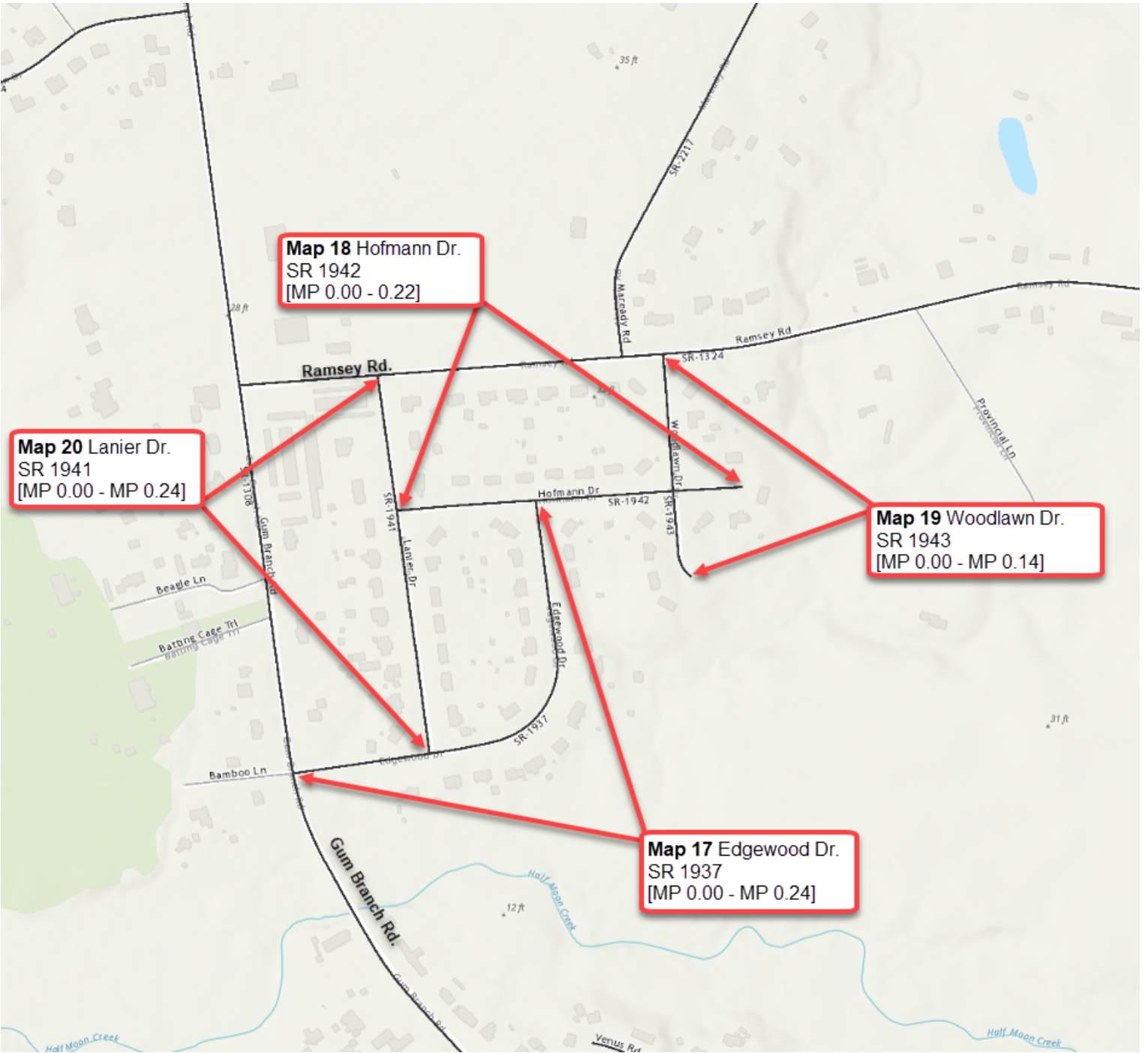




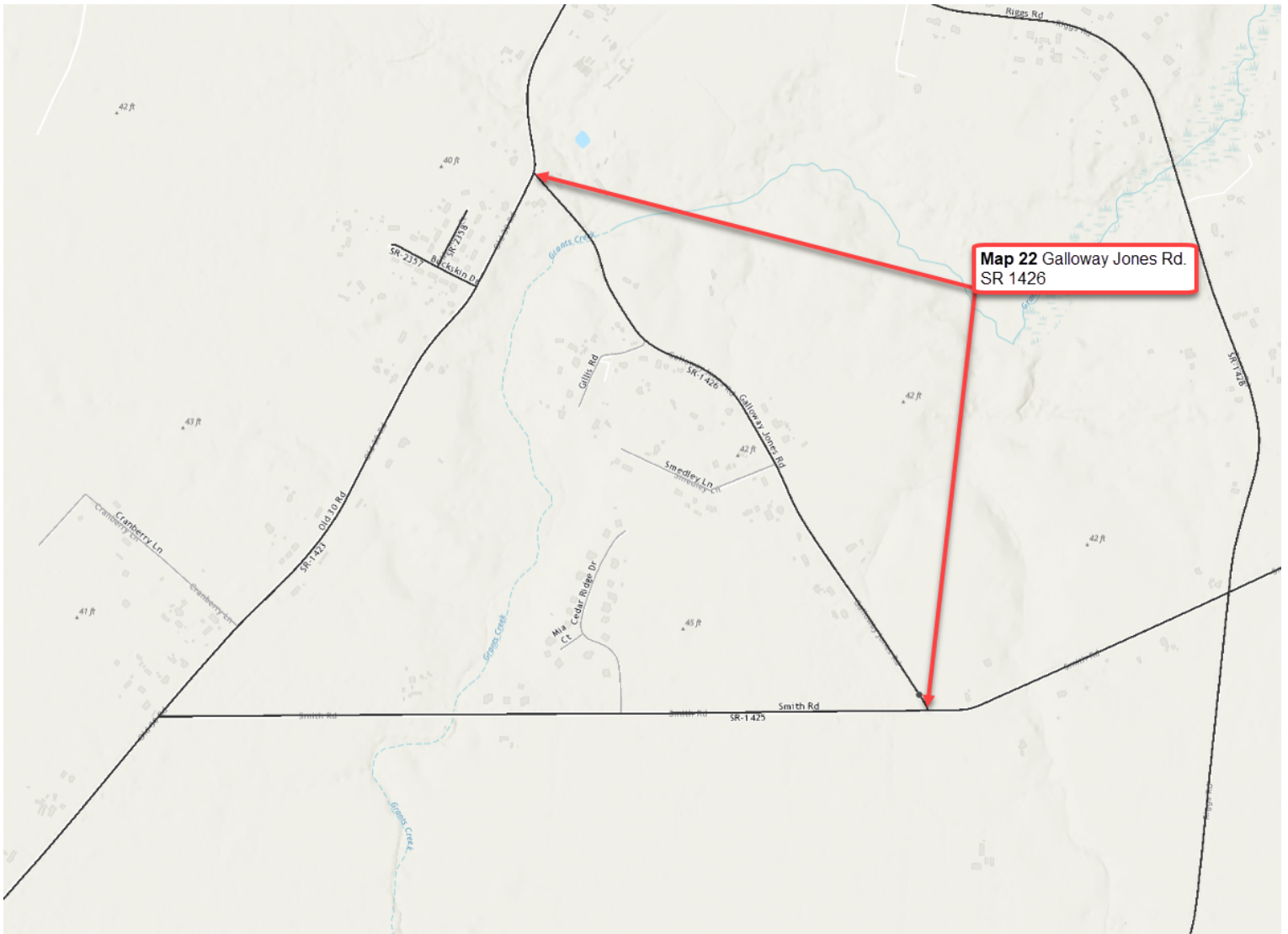


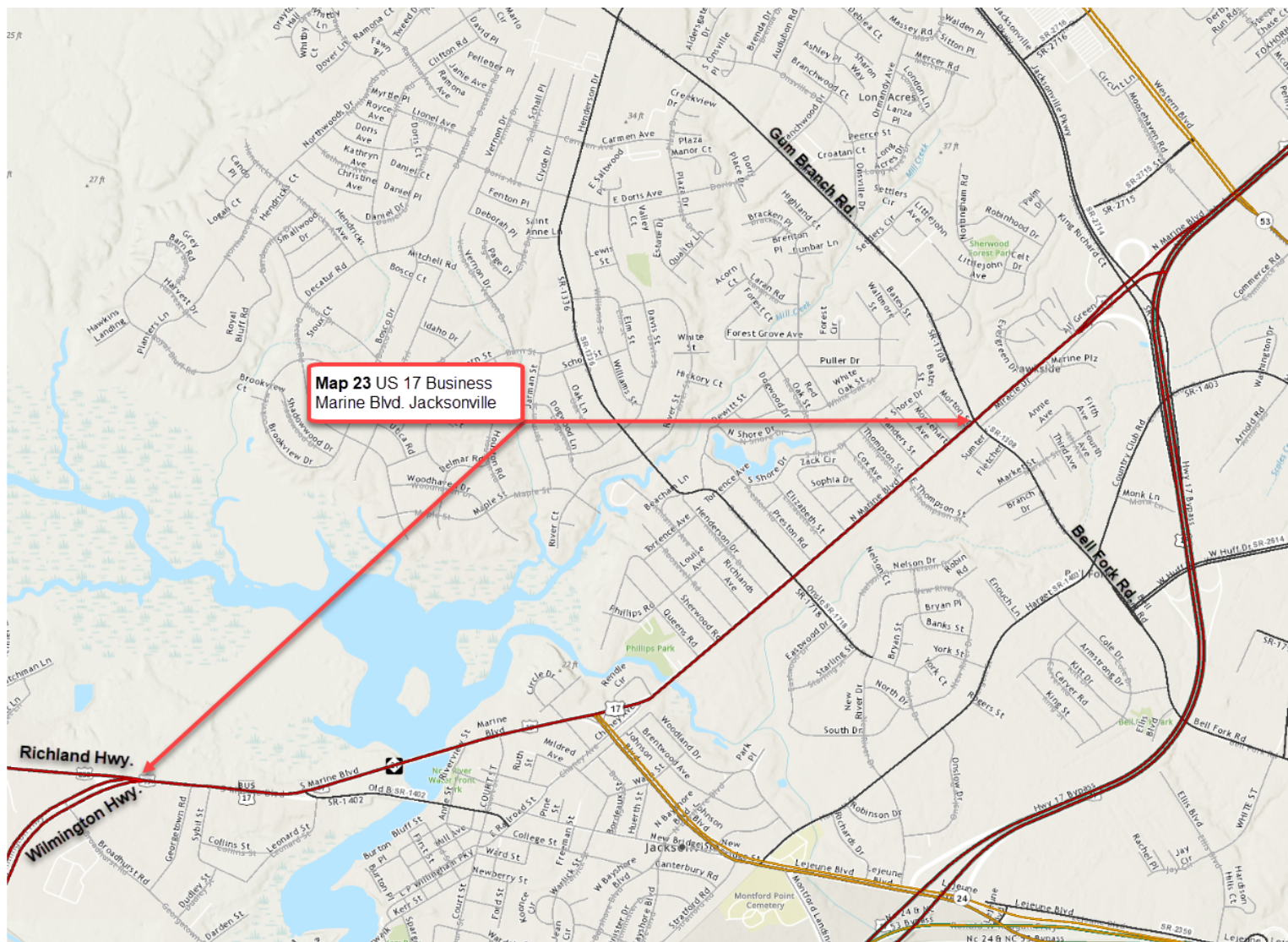




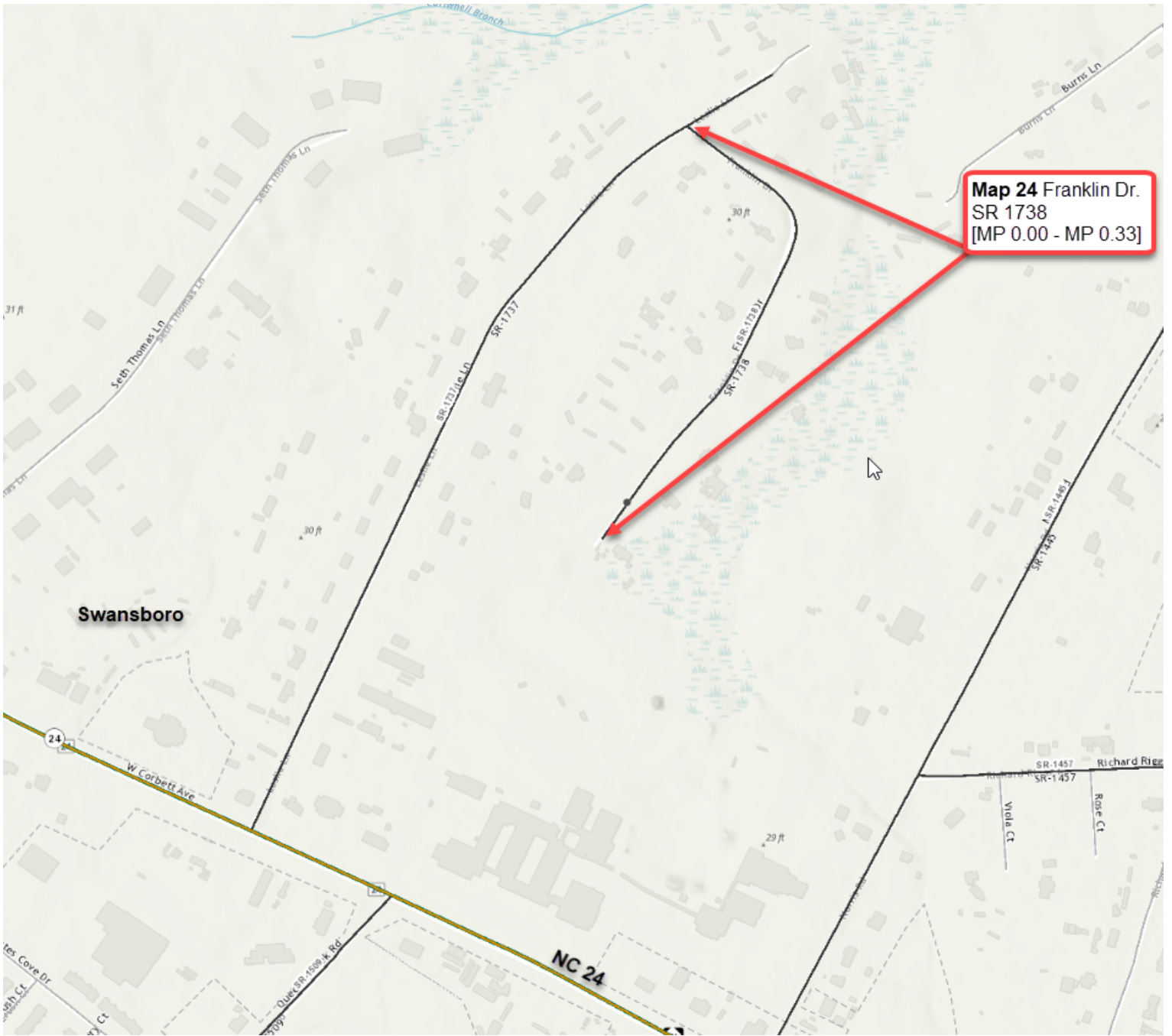


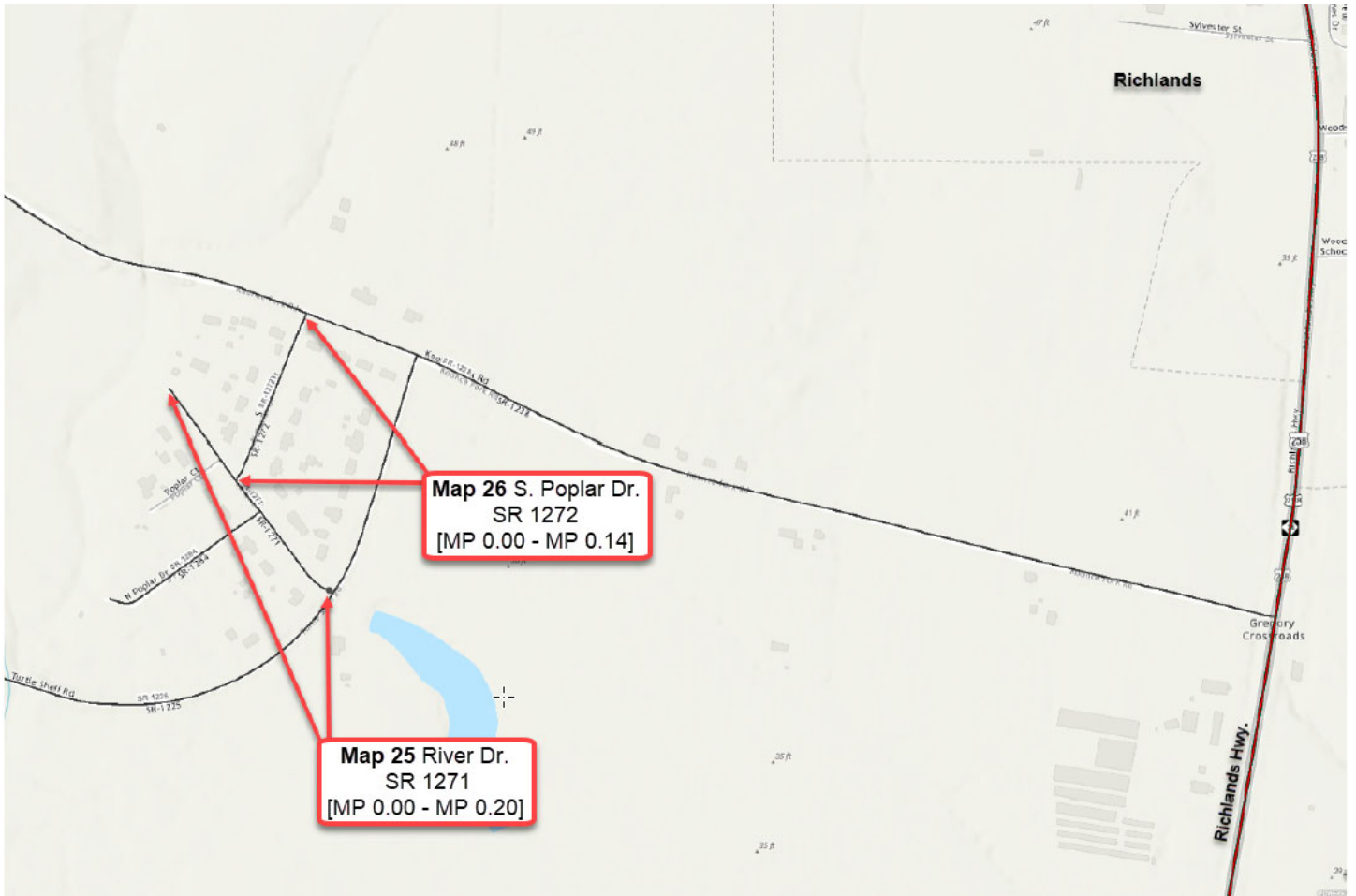


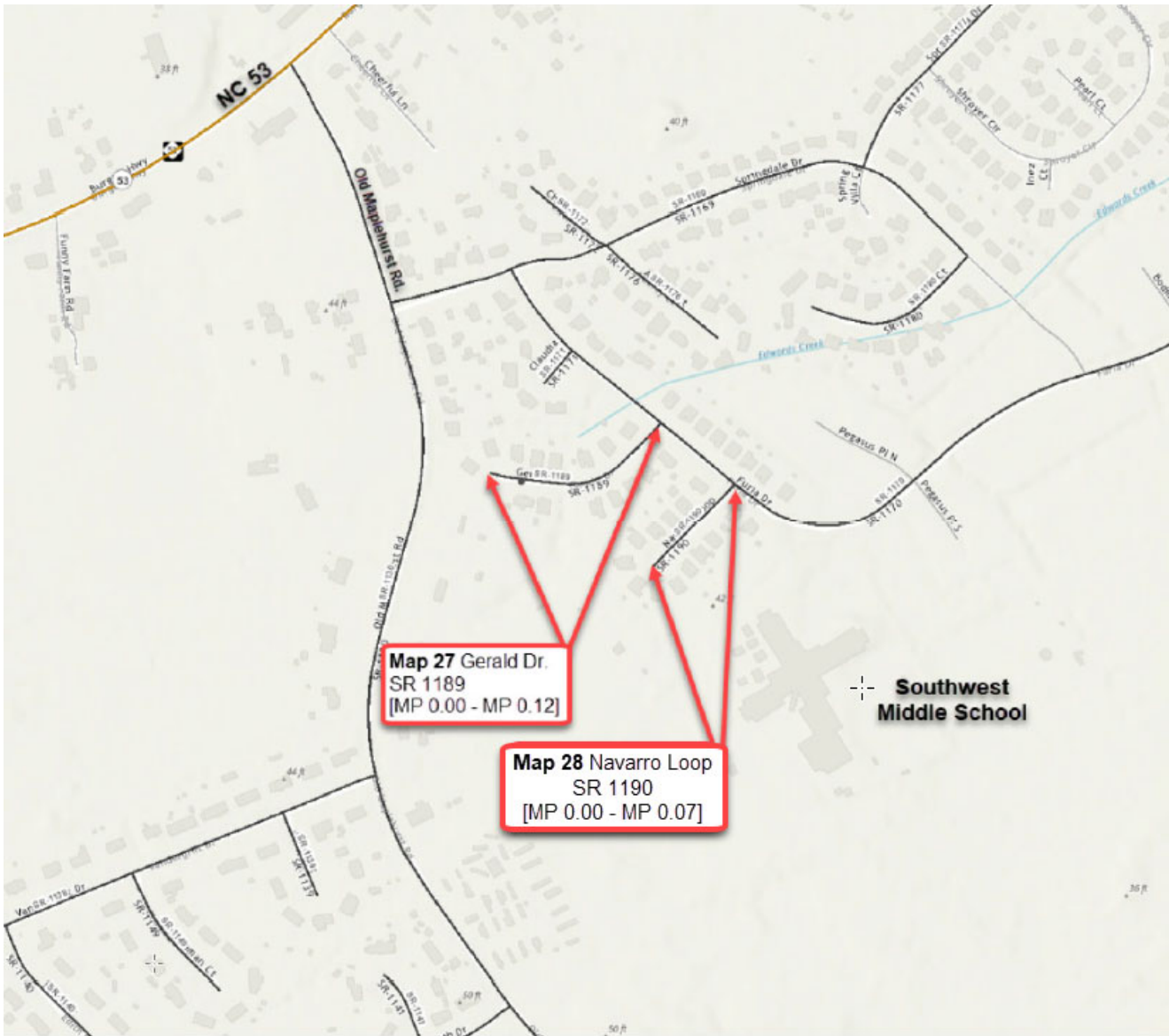




Map 23 US 17 Business
Marine Blvd. Jacksonville







2019CPT.03.17.20672

ONSLow CO. PAVEMENT PRESERVATION

MAP	ROUTE NO.	FROM	TO	LENGTH (MI.)	TREATMENT
1	1185	US 17	SR 1187	0.39	1" S4.75A RESURFACING
2	1198	SR 1199	CUL- DE-SAC	0.16	1" S4.75A RESURFACING
3	1199	US 17	END OF MAINTENANCE	0.74	1" S4.75A RESURFACING
4	1250	US 258	NC 53	0.26	1" S4.75A RESURFACING
5	1293	SR 1213	SR 2108	0.33	1" S4.75A RESURFACING
6	1294	SR 1293	CUL- DE-SAC	0.04	1" S4.75A RESURFACING
7	1305	SR 1302	SR 1304	0.37	PATCHING EXISTING PAVEMENT (FULL DEPTH)
8	1570	SR 1514	END OF MAINTENANCE	0.12	1" S4.75A RESURFACING
9	1681	NC 172	NC172	0.32	1" S4.75A RESURFACING
10	1924	SR 1920	CUL- DE-SAC	0.10	1" S4.75A RESURFACING
11	2101	SR 1293	CUL- DE-SAC	0.06	1" S4.75A RESURFACING
12	2116	SR 2122	SR 2117	0.32	1" S4.75A RESURFACING
13	2125	US 17	CUL- DE-SAC	0.20	1" S4.75A RESURFACING
14	2218	SR 1920	END OF MAINTENANCE	0.04	1" S4.75A RESURFACING
15	1176	SR 1169	CUL- DE-SAC	0.09	1" S4.75A RESURFACING
16	1989	SR 1988	CUL- DE-SAC	0.05	PATCHING EXISTING PAVEMENT (FULL DEPTH) & 1" S4.75A RESURFACING
17	1937	SR 1308	SR 1942	0.24	1" S4.75A RESURFACING
18	1942	SR 1941	CUL- DE-SAC	0.22	PATCHING EXISTING PAVEMENT (FULL DEPTH) & 1" S4.75A RESURFACING
19	1943	SR 1324	CUL- DE-SAC	0.14	1" S4.75A RESURFACING
20	1941	SR 1324	SR 1937	0.24	1" S4.75A RESURFACING
21	1449	SR 1447	KATHLEEN LANE	0.28	1" S4.75A RESURFACING
22	1426	SR 1423	SR 1425	0.98	PATCHING EXISTING PAVEMENT (FULL DEPTH)
23	US 17 BUS	US 258 BUS	SR 1308	2.76	PATCHING EXISTING PAVEMENT (FULL DEPTH)
24	1738	SR 1737	DEAD END	0.33	1" S4.75A RESURFACING
25	1271	SR 1225	END OF MAINTENANCE	0.20	1" S4.75A RESURFACING
26	1272	SR 1271	SR 1238	0.14	1" S4.75A RESURFACING
27	1189	SR 1170	CUL- DE-SAC	0.12	1" S4.75A RESURFACING
28	1190	SR 1170	CUL- DE-SAC	0.07	1" S4.75A RESURFACING

Note: Consult DC00279 Summary of Quantities for Asphalt Tonnage

TOTAL MILES

9.32

